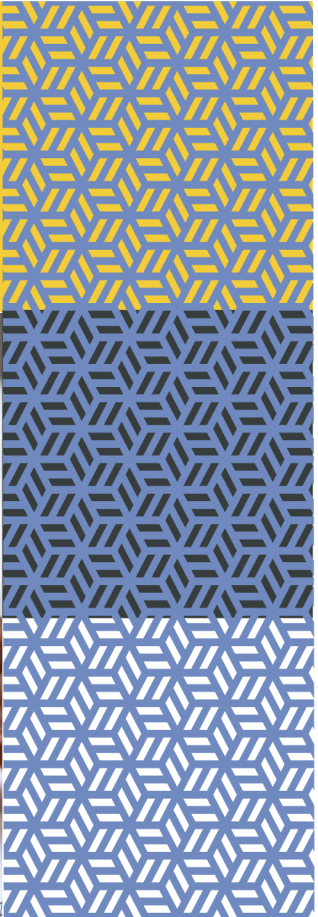
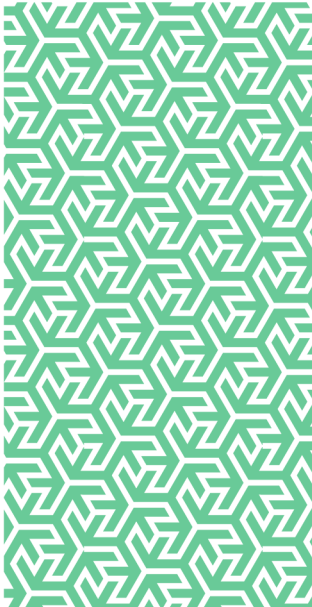


rmp

**Risk control**  
BT Redcare Closure



In partnership with



# BT Redcare Closure

BT Redcare is a division of BT that has been providing alarm signalling systems to homes and businesses within the UK for over three decades.

BT Redcare is a secure form of alarm monitoring. The service provides continuous monitoring of a BT telephone line that links a professionally installed alarm system on a premise to an alarm receiving centre. The result is the continuous protection of property.

However, on 1<sup>st</sup> February 2024 BT announced their intention to close all BT Redcare operations on 1<sup>st</sup> August 2025<sup>1</sup>. The advanced notice was to allow existing BT Redcare customers to find replacement providers in good time.

## BT Redcare Products

Prior to the announcement, BT Redcare's most recent product offering involved a range of alarm signalling products<sup>2</sup> including:

- **Essential IP**  
Simple alarm signalling
- **Essential**  
Wireless alarm signalling
- **Essential Extra**  
Wireless, dual-path alarm signalling
- **Advanced**  
Dual-path alarm signalling for medium risk sites
- **Advanced Extra**  
Faster dual-path alarm signalling for every level of risk
- **Ultimate**  
With private IP and resilient 4G signalling  
Intruder and fire alarm installers have been notified of the forthcoming closure and have been instructed to migrate all customers using BT Redcare services to an alternative service provider by the specified closure date.

## Choosing a New Provider

When choosing a replacement Alarm Transmission System, it is important to consider the impact on insurance coverage.

It is crucial to select a replacement service that offers a similar level of performance to the existing systems. Advice from an insurance broker or insurer should be sought if in any doubt ahead of any procurement process.

It is also important to ensure that the replacement system is installed by a company regulated by the National Security Inspectorate (NSI)<sup>3</sup> or the Security Systems and Alarms Inspection Board (SSAIB)<sup>4</sup>.

Additionally, the system should be maintained in full working order under a maintenance contract provided by a company or installer listed by one of the two alarm inspectorates mentioned previously (NSI or SSAIB).

Despite the length of notice given, customers are advised to take action as soon as possible to avoid any potential product shortages or installation delays that may occur closer to the 1<sup>st</sup> August 2025 deadline.

It is also recommended that customers check with their insurer to ensure that the proposed replacement system is acceptable prior to purchase and installation.

## References

1. BT Redcare is Closing, BT Redcare, available at: <https://www.redcare.bt.com/>
2. Our Products, BT Redcare, available at: <https://www.redcare.bt.com/products.html>
3. National Security Inspectorate (NSI), available at: <https://www.nsi.org.uk/>
4. Security Systems and Alarms Inspection Board (SSAIB), available at: <https://www.ssaib.org/about/>

## Further information

For access to further RMP Resources you may find helpful in reducing your organisation's cost of risk, please access the RMP Resources or RMP Articles pages on our website. To join the debate follow us on our LinkedIn page.

## Get in touch

For more information, please contact your broker, RMP risk control consultant or account director.

[contact@rmpartners.co.uk](mailto:contact@rmpartners.co.uk)



### **Risk Management Partners**

The Walbrook Building  
25 Walbrook  
London EC4N 8AW

020 7204 1800  
[rmpartners.co.uk](http://rmpartners.co.uk)

This newsletter does not purport to be comprehensive or to give legal advice. While every effort has been made to ensure accuracy, Risk Management Partners cannot be held liable for any errors, omissions or inaccuracies contained within the document. Readers should not act upon (or refrain from acting upon) information in this document without first taking further specialist or professional advice.

Risk Management Partners Limited is authorised and regulated by the Financial Conduct Authority. Registered office: The Walbrook Building, 25 Walbrook, London EC4N 8AW. Registered in England and Wales. Company no. 2989025.