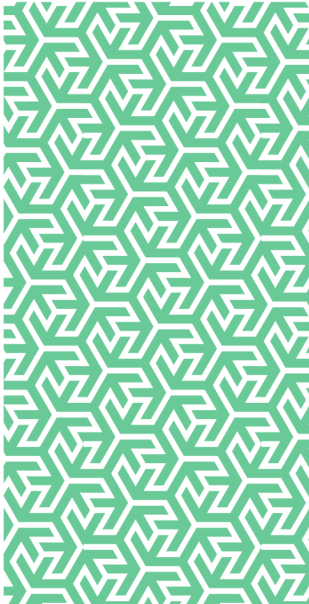


rmp

Risk control

Well Managed Highways Infrastructure Code of Practice



In partnership with


**GALLAGHER
BASSETT**
GUIDE. GUARD. GO BEYOND.

Well Managed Highways Infrastructure Code of Practice

It has now been a number of years since the end of the transitional period for Highways Authorities to move to the new 'Well Managed Highways Infrastructure Code of Practice' (the Code) for the management and maintenance of highways assets.

The Code does not set prescriptive intervention levels for defects or provide an associated hierarchy of response categories for repair. Instead, Highway Authorities (Road Authorities in Scotland) now have the freedom to set their own standards and investigatory criteria through the adoption of a 'Risk Based Approach' (RBA) and by considering local circumstances.

After the Code was launched in October 2016, RMP toured the country running a series of multi-client regional seminars and mock trial events to highlight the significant changes in approach promoted by the Code and to advise Highway Authorities on the possible implications, supporting them on their development of a risk-based approach. During this period, we were also working with our clients on a one-to-one basis to review Highways Asset Management Plans, Policies and Protocols to ensure they were adequately prepared to establish a robust defence should a claim be brought under the Code.

Although the deadline for adoption of the new Code has long since passed, RMP Risk Control recognises that central to the ethos of the code is continuous improvement and so we will be continuing to offer the following support services:

- Highways Risk Management Review – An independent review of arrangements for highways management when measured against the new Code and the ability to successfully repudiate claims. The review focusses on the following areas including Framework, Policy and Strategy; Risk Management; Risk-Based Approach; Network Inventory and Hierarchy; Safety Inspections; Defect Recording and Repair; Winter Maintenance and Severe Weather; Competencies and Training; and Outsourcing
- Highways Mini Risk Review – An abbreviated version of the Highways Risk Management Review which concentrates on several key themes.
- Training – We have a number of training courses specifically aimed at developing the understanding and competence of highways teams in applying risk management principles to highway asset management practices.
- Document Reviews and Claims Analysis – We can function as a "Critical Friend" and because of our unique access and insight into the approaches taken by numerous Highways Authorities we can evaluate documentation and provide feedback and suggestions for improvements where applicable.

If you would like to discuss the support options available to your Highways Team please contact your Broker, RMP Risk Control Consultant or RMP Account Director.

Further information

For access to further RMP Resources you may find helpful in reducing your organisation's cost of risk, please access the RMP Resources or RMP Articles pages on our website. To join the debate follow us on our LinkedIn page.

Get in touch

For more information, please contact your broker, RMP risk control consultant or account director.

contact@mpartners.co.uk



Risk Management Partners

The Walbrook Building
25 Walbrook
London EC4N 8AW

020 7204 1800
mpartners.co.uk

This newsletter does not purport to be comprehensive or to give legal advice. While every effort has been made to ensure accuracy, Risk Management Partners cannot be held liable for any errors, omissions or inaccuracies contained within the document. Readers should not act upon (or refrain from acting upon) information in this document without first taking further specialist or professional advice.

Risk Management Partners Limited is authorised and regulated by the Financial Conduct Authority. Registered office: The Walbrook Building, 25 Walbrook, London EC4N 8AW. Registered in England and Wales. Company no. 2989025.