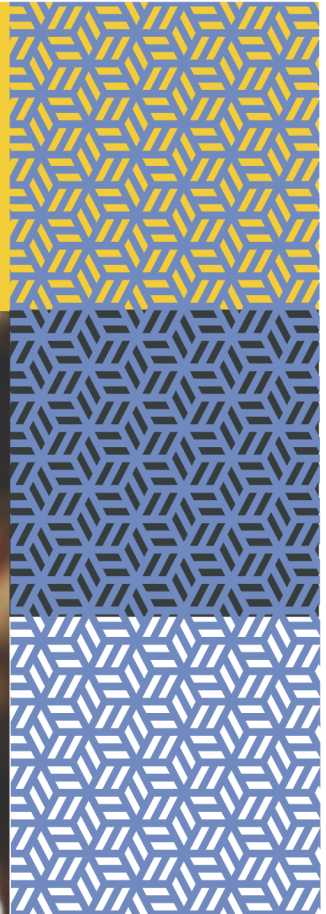
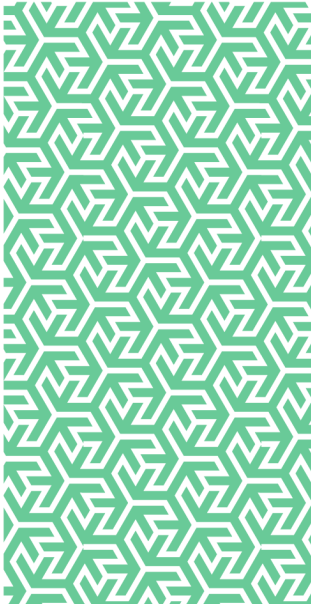


rmp

Risk control
Risk Management
Health Check



In partnership with



Risk Management Health Check

Introduction

Public sector organisations are exposed to a range of varied and complex risks which exist across all areas of service provision. If these risks are left uncontrolled, then the ability to achieve objectives may be harmed. Effective risk management standards enhance an organisation's ability to develop a better understanding of the nature, scale and potential effects of its risk exposure, and then take appropriate and proportionate action to reduce or mitigate downside threats and maximise upside opportunities.

The Risk Management Health Check is a multi-level assessment of the degree of maturity and effectiveness of your organisation's current risk management standards. It is designed to provide a third-party perspective on the strengths of current standards and identify opportunities for potential improvement.

The Health Check is based upon the 'Risk Management assessment framework: a tool for departments' as published by HM Treasury (2009), and maintains direct links to the standards depicted within the Alarm CiPFA 'National Performance Model for Risk Management in the Public Services'. The Health Check focuses upon issues such as

- Leadership and management (including risk appetite);
- Strategy and policy;
- People;
- Partnerships, shared risks and resources;
- Processes;
- Risk handling and assurance; and
- Outcomes and delivery

It is constructed using a series of pre-determined questions.

As well as a series of one-to-one interviews, a desktop review of relevant documentation will be carried out. A wider engagement with the organisation's management hierarchy can be achieved through the use of an online risk management survey which is based upon the same risk management standards.

On completion of the various stages of the review process, a structured report will be produced which will present the primary outcomes of the process, seeking to identify areas of best practice as well as identify any potential opportunities for improvement.

The Risk Management Health Check can be tailored to meet the specific needs of your organisation.

Further information

For access to further RMP Resources you may find helpful in reducing your organisation's cost of risk, please access the RMP Resources or RMP Articles pages on our website. To join the debate follow us on our LinkedIn page.

Get in touch

For more information, please contact your broker, RMP risk control consultant or account director.

contact@mpartners.co.uk



Risk Management Partners

The Walbrook Building
25 Walbrook
London EC4N 8AW

020 7204 1800
mpartners.co.uk

This newsletter does not purport to be comprehensive or to give legal advice. While every effort has been made to ensure accuracy, Risk Management Partners cannot be held liable for any errors, omissions or inaccuracies contained within the document. Readers should not act upon (or refrain from acting upon) information in this document without first taking further specialist or professional advice.

Risk Management Partners Limited is authorised and regulated by the Financial Conduct Authority. Registered office: The Walbrook Building, 25 Walbrook, London EC4N 8AW. Registered in England and Wales. Company no. 2989025.