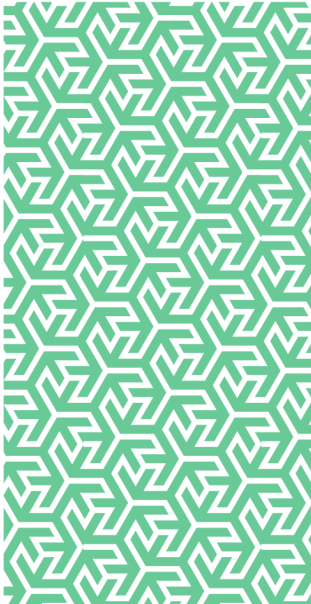


rmp

Risk control
Parkruns



In partnership with


**GALLAGHER
BASSETT**
GUIDE. GUARD. GO BEYOND.

Risk Control Parkruns

Introduction

Community runs and charity races are now commonplace across the UK but what impact is this having on the Local Authority and what risk considerations do they need to take?

The concept of 'parkruns' began in 2004 and have long since been welcomed by local authorities in supporting their health and wellbeing agenda for improving physical activity rates in communities as well as making use of public parks and open spaces.

Government ministers do not consider it appropriate for local authorities to charge a volunteer community seeking to provide a free weekly event for the use of a public park and so local authorities, including parish councils, cannot charge parkrun or junior parkrun organisers for the use of public parks. Instead there is a desire to see increasing collaboration between councils and parkrun organisers to raise participation rates and contribute further to improving the health and wellbeing of residents.

Local Authorities

With an ever reducing financial envelope as well as responsibility for the public health of residents; local councils have been innovative in their approaches to new uses of park spaces - including providing pop up stalls or hosting local events including parkruns.

Local authorities are encouraged to build strong collaborative relationships with parkrun organisations to enable risks to be managed and events to run smoothly.

Parkrun UK makes it clear on their website when runners register that they are participating at their own risk.

However, health and safety is a serious consideration ahead of any event for both the local authority and the parkrun organisers and appropriate steps are taken to manage the welfare of participants.

Parkrun UK

Parkrun UK (www.parkrun.org.uk) organise free, weekly, 5km timed runs around the world. All runs are open to anyone and are free to take part. The organisation operates through the support of sponsors and volunteers. Their aim is to have an event in every community that wants one and they encourage members of the public to contact them to suggest new parks and run routes for them to consider.

Each event is coordinated and the company even has a Safeguarding Lead.

Saturday morning parkrun events are 5K and on Sunday mornings, there are 2K junior parkruns for children aged four to fourteen¹. As at the 31st March 2021, there had been 166,956 coordinated completed events at 730 parkrun locations, with 34.8 million people who finished a run².

Management of Risk

Ahead of every event, parkrun organisers and volunteers will walk the route, checking for the condition of the park and identifying any hazards for runners. A risk assessment is completed and any required remedial works to the park are undertaken ahead of the event. On the day of the run the route is usually taped round, with direction signs to ensure runners stay on the designated track for the run event. Volunteer marshals are given a briefing by the run director of the day and are then posted at intermittent points in the run route to provide assistance should it be required. A tail runner is also appointed to be the last runner in the event.

Consideration is also given to condition of the ground underfoot and the weather conditions. Where events need to be cancelled for such reasons, runners either receive notification or this is posted on the organisations website.

Parkrun's policy is continuously under review and safety is a significant feature. In Norwich, significantly increased numbers of participants resulted in organisers having to ban runners from bringing their dogs with them as this was posing an increased risk (<https://www.parkrun.org.uk/norwich/course/>). Parkruns are covered by the UK Athletics Insurance Scheme for Clubs.

COVID-19 Impact on Parkruns

In the wake of the global COVID-19 pandemic, Parkrun operators closed future planned parkrun events in March 2020.

As a worldwide organisation – Parkrun complied with restrictions imposed in each territory and closely monitored country specific guidance on if and when runs could be reinstated as restrictions were eased.

In August 2020, Parkrun produced and published a COVID-19 Framework and set of frequently asked questions for their plans on how they would operate safely when permitted to do so in each territory whilst there would still be an underlying level of the virus present³.

¹ [home | parkrun UK](#)
² [events | parkrun UK](#)

³ [COVID-19 Framework \(parkrun.com\)](#)

Parkrun provide regular updates on the status of runs on the blog section of their website. As at 30th March 2021; Parkrun had confirmed that they expected 52 junior parkrun events to restart in England on Sunday 11th April as part of the UK's lockdown easing measures⁴.

Summary

The benefits brought to local communities through the introduction of Parkruns are plentiful. Local authorities should prepare for the reintroduction of runs as Government restrictions ease once the virus is at a manageable level.

Parkruns receive thousands of new joiners each week across the world and with this will bring increased risk for events as numbers grow and the management of them becomes more complex.

Local Authorities should work closely alongside organisers to ensure the appropriate insurances and risk mitigations are in place in order to ensure participants are protected and the events remain the safe and fun events they should be.

References

- 1 LGA Briefing – LGA calls for further collaborative working between councils and parkruns (www.local.gov.uk)
- 2 Running Free- Consultation on Preserving the free use of public parks (https://assets.publishing.service.gov.uk/government/uploads/system/uploads/attachment_data/file/608372/Parkrun_ConDoc.pdf)

⁴ [COVID-19 \(Coronavirus\) update 30 March | parkrun UK Blog](#)

Further information

For access to further RMP Resources you may find helpful in reducing your organisation's cost of risk, please access the RMP Resources or RMP Articles pages on our website. To join the debate follow us on our LinkedIn page.

Get in touch

For more information, please contact your broker, RMP risk control consultant or account director.

contact@rmpartners.co.uk



Risk Management Partners

The Walbrook Building
25 Walbrook
London EC4N 8AW

020 7204 1800
rmpartners.co.uk

This note is not intended to give legal or financial advice, and, accordingly, it should not be relied upon for such. It should not be regarded as a comprehensive statement of the law and/or market practice in this area. In preparing this note we have relied on information sourced from third parties and we make no claims as to the completeness or accuracy of the information contained herein. It reflects our understanding as at 31 March 2021, but you will recognise that matters concerning COVID-19 are fast changing across the world. You should not act upon information in this bulletin nor determine not to act, without first seeking specific legal and/or specialist advice. No third party to whom this is passed can rely on it. We and our officers, employees or agents shall not be responsible for any loss whatsoever arising from the recipient's reliance upon any information we provide herein and exclude liability for the content to fullest extent permitted by law. Should you require advice about your specific insurance arrangements or specific claim circumstances, please get in touch with your usual RMP Risk Control consultant or account director.

Risk Management Partners Limited is authorised and regulated by the Financial Conduct Authority. Registered office: The Walbrook Building, 25 Walbrook, London EC4N 8AW. Registered in England and Wales. Company no. 2989025.