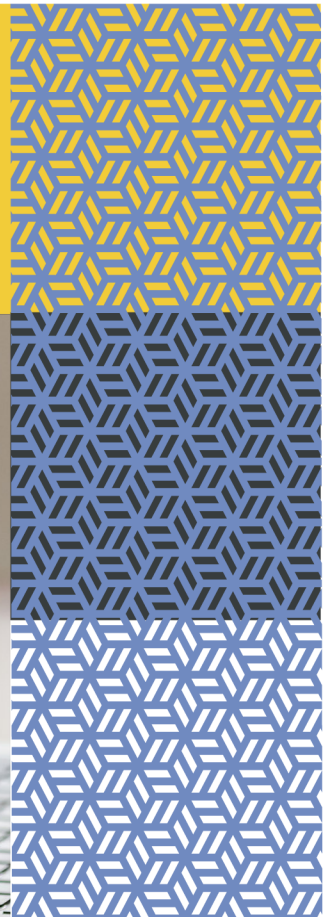
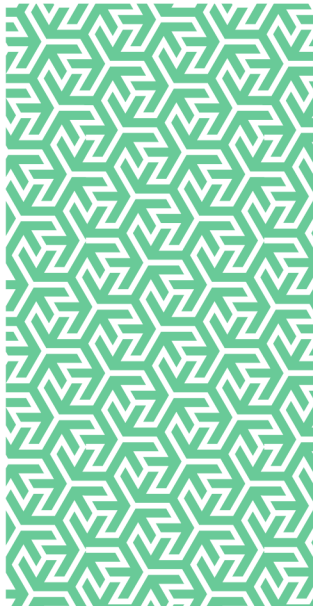



The logo for Risk Management Partners (rmp) is displayed in white lowercase letters on a dark grey rectangular background.

Risk control
Bite Size Virtual
Training Programme
Casualty Risk



In partnership with


**GALLAGHER
BASSETT**
GUIDE. GUARD. GO BEYOND.

One Hour Virtual Casualty Risk Management Training Courses

RMP Risk Control have developed a programme of one-hour on-line training courses on various subjects related to the management of Employers' Liability (EL) and Public Liability (PL) risk management. By doing so, we can dynamically address important subjects and support our clients in a challenging and changing world. We are no longer reliant on classroom environments and can utilise our technology to bring this training directly to your employees' homes and offices.

Programme and Dates

The programme is split into two streams – Health and Safety and Enterprise Risk Management. A synopsis of the key learning points from each session is shown on the next page in this programme.

Health and Safety Courses

	Date	Date
- Health and Safety Awareness	21.09.20 (AM)	02.11.20 (PM)
- Personal Protective Equipment (including face masks)	25.09.20 (AM)	03.11.20 (PM)
- Health and Safety Risk Assessment	12.10.20 (AM)	06.11.20 (PM)
- Legionella and the reopening of buildings	24.09.20 (PM)	16.10.20 (AM)
- Homeworking	23.09.20 (AM)	15.10.20 (PM)
- Control of Noise and Hand Arm Vibration	14.10.20 (PM)	05.11.20 (AM)
- Slips, Trips and Falls	04.11.20 (AM)	02.12.20 (PM)

Enterprise Risk Management Courses

	Date	Date
- Enterprise Risk Management Overview	28.10.20 (AM)	23.11.20 (PM)
- ERM Risk Assessment	09.10.20 (AM)	14.12.20 (PM)
- Risk Perception	05.10.20 (PM)	25.11.20 (AM)
- ERM Risk Control	30.10.20 (AM)	16.12.20 (PM)
- Project Risk Management	06.10.20 (AM)	27.10.20 (PM)
- Stress Risk Management	26.10.20 (AM)	24.11.20 (PM)
- COVID-19: Discerning Fact from Fiction	08.10.20 (PM)	27.11.20 (AM)

AM courses will commence at 1100hrs with a duration of one hour.

PM courses will commence at 1400hrs with a duration of one hour.

All courses are available in longer format on request.

Pricing

For clients who benefit from the use of RMP Risk Control Consultancy Days, a nominal charge of 0.25 day per course will be applied. This charge will cover access for up to 20 delegates from any individual organisation to a nominated course.

For clients who do not benefit from the use of RMP Risk Control Consultancy Days, a nominal charge of £50 per course will be applied. This charge will cover access for up to 20 delegates from any individual organisation to a nominated course.

Discounts are available for group bookings.

Booking and Further Information

Exclusive courses can be arranged as required.

For further information or to book a place on any of the above courses, please contact your local Risk Control Consultant or e-mail: riskcontroluk@gbtpa.com

Course Synopsis

Health and Safety Courses

Health and Safety Awareness

- General introduction to workplace health and safety
- The need for health and safety and the legal basics
- A systematic approach to health and safety management

Personal Protective Equipment (including face masks)

- Benefits and limitations of PPE
- Main requirements of the PPE Regulations
- Types of PPE and considerations for selection and use

Health and Safety Risk Assessment

- Aims and common pitfalls of risk assessment
- Legal basics and HSE's 5 Step Approach
- Practitioner tips and techniques to improve your assessments

Legionella and the Reopening of Buildings

- Legionella essentials
- Relevant legislation and the Approved Code of Practice L8
- How to keep people safe

Homeworking

- Homeworking framework
- The COVID-19 influence
- Managing homeworking risk and supporting employees

Control of Noise and Hand Arm Vibration

- How noise and vibration causes harm
- Overview and relevant legislation
- Options for control

Slips, Trips and Falls

- Scale of the problem (and causation)
- Legal requirements
- Strategies for control

Risk Management Courses

Enterprise Risk Management Overview

- General introduction to ERM
- Risk management essentials
- Critical success factors

ERM Risk Assessment

- Purpose and benefit of RA
- Quantitative versus Qualitative
- A practical exploration of RA techniques

Risk Perception

- Introduction to risk perception
- Influences on perception
- Heuristics and biases

ERM Risk Control

- Purpose of risk control
- Control options
- Effectiveness of controls

Project Risk Management

- The Golden Rules of Project Risk Management
- Building your project risk register
- Why projects fail and celebrating successes

Stress Risk Management

- Scale of the problem
- HSE's Management Standards
- Critical success factors

COVID-19: Discerning Fact from Fiction

- Discovery and spread
- Routes of transmission
- Symptoms and outcomes



Risk Management Partners

The Walbrook Building
25 Walbrook
London EC4N 8AW
020 7204 1800
rmpartners.co.uk

This newsletter does not purport to be comprehensive or to give legal advice. While every effort has been made to ensure accuracy, Risk Management Partners cannot be held liable for any errors, omissions or inaccuracies contained within the document. Readers should not act upon (or refrain from acting upon) information in this document without first taking further specialist or professional advice.

Risk Management Partners Limited is authorised and regulated by the Financial Conduct Authority. Registered office: The Walbrook Building, 25 Walbrook, London EC4N 8AW. Registered in England and Wales. Company no. 2989025.

FP1182-2020