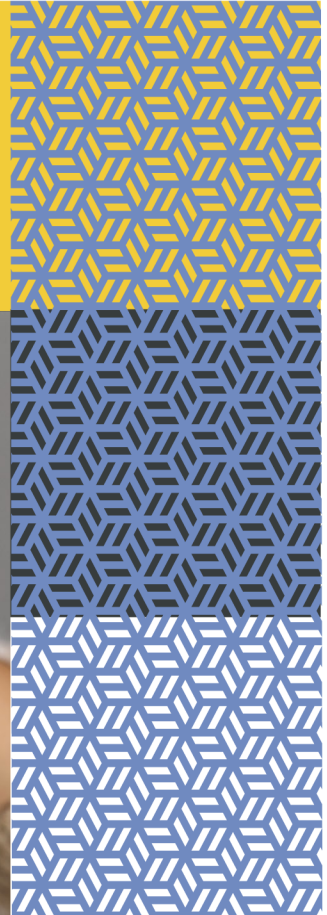
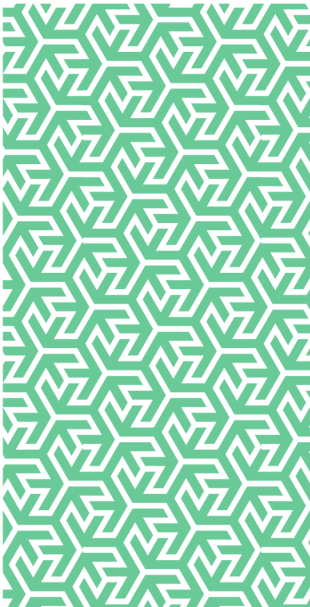


rmp

Risk control
COVID-19
Returning to the
Workplace - Legionella



In partnership with


**GALLAGHER
BASSETT**
GUIDE. GUARD. GO BEYOND.

Risk Control

COVID-19

Returning to the Workplace - Legionella

Introduction

Cases of Legionella outbreaks may lead to organisations and individual officers being prosecuted in the criminal courts. These prosecutions may be for breaches of health and safety legislation, and / or gross negligence manslaughter.

If your building was closed or has had reduced occupancy during the coronavirus (COVID-19) outbreak, water system stagnation can occur due to lack of use which increases the risks of legionnaires disease.

RMP Risk Control Support

RMP Risk Control can support your safe return to the workplace in the following ways:

- Bite Size Training on Legionella
- Half Day Virtual Training on Legionella Risk Management
- Legionella Risk Management Review.

Bite Size Training on Legionella

Our one hour bite size training sessions on legionella provide an introduction to the disease, covering what legionella is, how and where it arises, the legal basics and risk management steps you can take to control it.

This is a popular bite size topic within our programme and we have sessions running throughout the remainder of 2020. Please contact your Risk Control Consultant or RMP Account Director for details of dates and availability.

Legionella Risk Management Training

Our half day Legionella Risk Management Training course can be delivered virtually by our Risk Consultants.

The intended audience is Line Managers and Supervisors responsible for the management and provision of water services and all others involved in the day to day management or provision of water services.

The course is designed to raise awareness of the risk infection from legionella and to provide participants with a sound understanding of the nature of the disease and the tools to employ to control the risk.

The course will address:

- Duties under the law
- L8 – The control of legionella bacteria in water systems ACoP
- Key management factors.

The course provides delegates with a fundamental understanding of:

- The nature legionnaires disease
- The causes of outbreaks
- An overview of the scale of the problem
- A five step process to comply with legislative requirements and control the risk of infection in the workplace.

Please contact your Risk Control Consultant or RMP Account Director to arrange a virtual training session.

Legionella Risk Management Review

The Control of Legionella Risk Management Review is designed to evaluate the adequacy of policy and implementation of procedures in eight key areas:

- Risk assessment
- Roles and responsibilities
- Design and installation of hot and cold water services
- Prevention and control
- Protection of personnel
- Cooling towers and other risk systems
- Monitoring and inspection
- Record keeping.

Methodology

Your RMP Risk Control Consultant will conduct meetings with key personnel within the legionella control management hierarchy to discuss the various aspects of the systems and procedures in place.

Please contact your Risk Control Consultant or RMP Account Director to book a review.

Further information

For access to further RMP Resources you may find helpful in reducing your organisation's cost of risk, please access the RMP Resources or RMP Articles pages on our website. To join the debate follow us on our LinkedIn page.

Get in touch

For more information, please contact your broker, RMP risk control consultant or account director.



Risk Management Partners

The Walbrook Building
25 Walbrook
London EC4N 8AW

020 7204 1800
rmpartners.co.uk

This note is not intended to give legal or financial advice, and, accordingly, it should not be relied upon for such. It should not be regarded as a comprehensive statement of the law and/or market practice in this area. In preparing this note we have relied on information sourced from third parties and we make no claims as to the completeness or accuracy of the information contained herein. It reflects our understanding as at 26 August 2020, but you will recognise that matters concerning COVID-19 are fast changing across the world. You should not act upon information in this bulletin nor determine not to act, without first seeking specific legal and/or specialist advice. No third party to whom this is passed can rely on it. We and our officers, employees or agents shall not be responsible for any loss whatsoever arising from the recipient's reliance upon any information we provide herein and exclude liability for the content to fullest extent permitted by law. Should you require advice about your specific insurance arrangements or specific claim circumstances, please get in touch with your usual RMP Risk Control consultant or account director.

Risk Management Partners Limited is authorised and regulated by the Financial Conduct Authority. Registered office: The Walbrook Building, 25 Walbrook, London EC4N 8AW. Registered in England and Wales. Company no. 2989025.