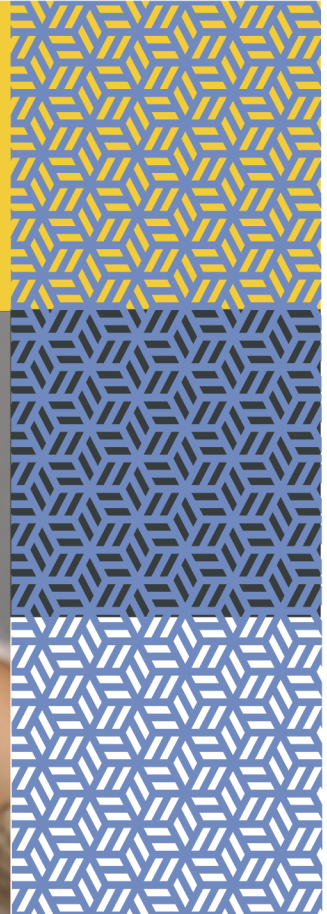
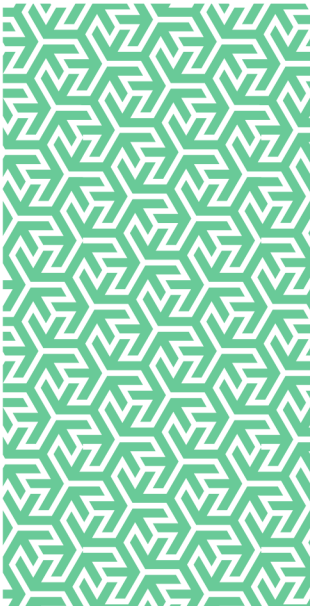


rmp

Risk control
COVID-19
Returning to the
Workplace



In partnership with


**GALLAGHER
BASSETT**
GUIDE. GUARD. GO BEYOND.

Risk Control

COVID-19

Returning to the Workplace

Introduction

In preparation for a return of the workforce and the public to businesses, RMP Risk Control is offering a comprehensive range of services to assist in mitigating the risk of infection to employees and visitors to your premises.

Risk Analysis of Buildings / Workplaces

(Prior to re-occupancy)

- Pre-assessment consultation guiding appointed company representative (ACR) on appropriate personal protective equipment (PPE) to wear during assessment.
- Guidance on installation of remote audit application on ACR's smart phone.
- Remote assessment by Risk Consultant and provision of **COVID-19 Risk Report** (including images/video obtained through remote assessment) providing guidance on:
 - Required modifications to worker/public access areas.
 - Required provision of PPE for barrier protection.
 - Requirement for specialist COVID-19 Decontamination service.
 - Homeworking alternative where possible.
- Risk Analysis and Guidance will enhance the prospect of successfully defending any COVID-19 related claim.

COVID-19 Decontamination Guidance

- Decontamination Assessment
- Decontamination Solution to include:
 - ULV Electrostatic disinfection going beyond Public Health England guidance.
 - Provision of photographic evidence of decontamination cleaning for restoring confidence.
 - Guidance on modifications required to pre-COVID-19 routine cleaning & disinfection protocols.
 - Guidance on PPE and products for use by cleaning staff.
 - Guidance on frequency of a decontamination ULV electrostatic disinfection regime.
- Training of in-house facilities and maintenance staff.

COVID-19 Decontamination Service

• Facility Health & Safety Plans

Analysis of facilities through COVID-19 Risk Analysis and communication to ascertain volume of employee and visitor footfall to identify potential hazard points and develop policies and procedures to minimise the risk of pathogen transmission.

• Deep Cleaning Protocols

Implement facility-cleaning protocols to eliminate pathogens through intensive disinfectant procedures, minimising risk of exposure and transmission.

• Emergency Response Plans

Develop a customised plan to provide early identification of an emergency and timely response to minimise risks and operational interruption.

• Remote Training & Communication

Promote a culture of safety and a safe working environment through online training and regular communication of health and safety plans and protocols to employees and other stakeholders.

• Onsite Decontamination

Going beyond the advice and guidance, we will actually provide a full comprehensive onsite decontamination service either to support an emergency response plan or in accordance with your 'Returning to the Workplace' programme

The Decontamination Process

Protocols differ based on suspect or confirmed infection.

- Assess the Site / Situation
- Establish a Scope, Work Plan and Schedule
- Establish a Budget and obtain Client Approval
- Prepare a Site Specific Health & Safety Plan
- Mobilisation: Phase and coordinate the work
- Track the progress and costs
- Oversee and Enforce Safety Precautions concerning workforce exposure
- Conduct final assessment and testing / Verification

Further information

For access to further RMP Resources you may find helpful in reducing your organisation's cost of risk, please access the RMP Resources or RMP Articles pages on our website. To join the debate follow us on our LinkedIn page.

Get in touch

For more information, please contact your broker, RMP risk control consultant or account director.



Risk Management Partners

The Walbrook Building
25 Walbrook
London EC4N 8AW

020 7204 1800
rmpartners.co.uk

This note is not intended to give legal or financial advice, and, accordingly, it should not be relied upon for such. It should not be regarded as a comprehensive statement of the law and/or market practice in this area. In preparing this note we have relied on information sourced from third parties and we make no claims as to the completeness or accuracy of the information contained herein. It reflects our understanding as at 4 June 2020, but you will recognise that matters concerning COVID-19 are fast changing across the world. You should not act upon information in this bulletin nor determine not to act, without first seeking specific legal and/or specialist advice. No third party to whom this is passed can rely on it. We and our officers, employees or agents shall not be responsible for any loss whatsoever arising from the recipient's reliance upon any information we provide herein and exclude liability for the content to fullest extent permitted by law. Should you require advice about your specific insurance arrangements or specific claim circumstances, please get in touch with your usual RMP Risk Control consultant or account director.

Risk Management Partners Limited is authorised and regulated by the Financial Conduct Authority. Registered office: The Walbrook Building, 25 Walbrook, London EC4N 8AW. Registered in England and Wales. Company no. 2989025.