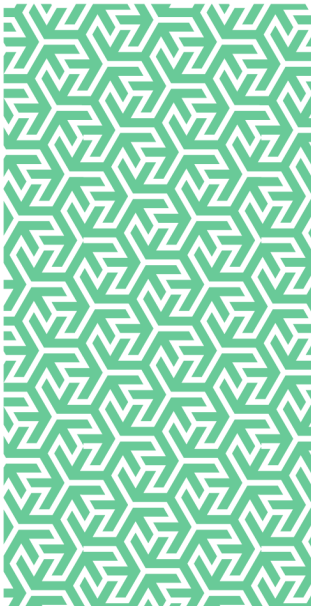


rmp

Risk control

Play: The Universal Language of Children



In partnership with


**GALLAGHER
BASSETT**
GUIDE. GUARD. GO BEYOND.

Play: The Universal Language of Children

Introduction

The 'Play Strategy For Scotland: Our Vision' [Ref.1] is an initiative launched by the Scottish Government back in 2013 as part of their wider ambition for Scotland to be the best place in the world to grow up. The strategy promotes the value of play as a life-enhancing experience for all children and young people – not just at home but in nurseries, schools and within the community. The strategy sets out the Scottish Government's desire for children to be able to play freely and safely whilst learning to manage risks for themselves and begin to make choices.

What is play?

The Play Strategy states that "Play comes in many forms. It can be active, passive, solitary, independent, assisted, social, exploratory, educational or just for fun. Moreover, it can happen indoors or outdoors, it can be structured, creative, messy, entirely facilitated by the imagination or can involve using the latest gadgets. Many people say it's a child's 'job' to play and the whole of society has a role in ensuring we can support children to behave as children, minimising the pressure on them to grow up too quickly. We consider play as the primary tool for addressing this challenge, through allowing children and young people to experience fun, joy and laughter in a way that is important to them" [ref.1].

Why is it important?

The Strategy makes reference to Article 31 of the UN Convention on the Rights of the Child (UNCRC) [ref.2] which states that every child has the "right to rest and leisure, to engage in play and recreational activities appropriate to the age of the child and participate freely in cultural life and the arts".

Play is the universal language of children and a fundamental part of any childhood. Its deeper benefits are that children who experience a rich play experience concentrate better in class and have better break time behaviour in school. By investing in children in their early years; the Scottish Government believes it will reap the rewards economically and socially in later years.

"Play creates a brain that has increased flexibility and improved potential for learning later in life" [ref.3].

The Play Strategy is supported by an action plan, with both contributing directly towards national outcomes via the Getting It Right For Every Child (GIRFEC) approach which underpins and supports all policies for children and young people while complementing proposals in the Children and Young People (Scotland) Bill and supporting the 3 main

social policy frameworks; Early Years Framework, Equally Well and Achieving our Potential [ref.4]

Bringing the Strategy to Life

The Play Strategy is accompanied by the 'Play Strategy Action Plan' [ref.5] which sets out the activities that are needed to be delivered by multiple bodies, including local authorities, in order to achieve the aims of the strategy and improve the play experiences of all children and young people, including those with disabilities or from disadvantaged backgrounds.

The timeline for delivering the actions ranged from 6-12 months through to 3+ years, which is why the actions within the Play Strategy are still actively being implemented today. There were many actions for local authorities to deliver.

These include the requirement to:

- Investigate and review good practice in reaching all parents and carers with clear messages and guidance on cost effective resources and suggestions for play suitable for children of all ages, stages and abilities.
- Audit current levels of community access to school grounds (including the wider school environment of streets and routes to school) and identify key influencing factors. Consider options for increasing community access to school playgrounds out of school hours. Put forward recommendations for piloting, evaluating and sharing good practice.
- Work to achieve high quality school grounds in new build schools which are consistent with the Good School Playground Guide.
- Task a working group to identify steps required to support the development of a Play Policy in every local authority including reference to the six priorities of single outcome agreements.

Local Authority Role

The Scottish Government has invested significantly in the provision of financial funding for infrastructure and projects to bring the strategy to life. A progress update report published by the Government in 2021 details positive progress has been made in its implementation [ref.6].

Each local authority is tasked with delivering a Play Policy which should include the design and build of outdoor play equipment in school grounds and in natural and wild spaces.

Whilst the benefits of these provisions are clear, local authorities must be mindful of the property and liability risks which can attach.

Where the erection or installation of a play area or play equipment foreseeably introduces either a casualty or property risk, the council must ensure a suitable and sufficient risk assessment is in place to control any hazards. If council officers do not have the required competence to undertake the required risk assessments, then reference should be made to the relevant property or casualty consultants appointed to ensure controls are adequate to prevent injury or loss.

The impact of COVID-19

The most recent Review recommended a renewed effort on the following areas:

- ensure children's mental and physical health is supported through access to play opportunities;
- focus on children and young people who have been specifically impacted by COVID-19;
- address the opportunity gap for children who have missed out on education, developmental stages and transitions as a result of COVID-19;
- take into account children and families who have experienced exclusion due to disability, additional support needs and other circumstances;
- explore the role and impact of digital use on play during COVID-19;
- ensure the refreshed Play Strategy applies to children and young people of all ages;
- explore how COVID-19 has impacted on the domains of home, ELC and school and community;
- commit to taking forward the implementation of current legislation, guidance and policies that are relevant to play such as the Planning (Scotland) Act 2019 and the UNCRC Incorporation (Scotland) Bill.

How can we support you?

RMP Risk Control have experience in assisting clients in all areas of liability risk management, including play equipment and play areas. More specifically, we have experience in assisting local authorities in the following areas:

- Casualty review of management systems designed to control the risk of pupil injury from playground equipment.
 - **Note:** the duty to ensure the area and equipment are risk assessed and controlled is the responsibility of the local authority and we are unable to complete the risk assessments on behalf of the council.
- Where disputes arise between the education authority/schools and parents over the safety of equipment

or play areas, we have reviewed the play area and provided recommendations on resolution steps.

- Training for school staff on the risk assessment process to support them in carrying out required risk assessments on their play areas.

References

1. Play Strategy For Scotland: Our Vision. Available online at: <https://www.gov.scot/publications/play-strategy-scotland-vision/> [Accessed 24 November 2021]
2. Internal Play Association Scotland. Article 31 <https://www.ipascotland.org/article-31/> [Accessed 24 November 2021].
3. Parent Zone Scotland. 2018. Learning Through Play. Available online at: <https://education.gov.scot/parentzone/learning-at-home/Learning%20through%20play> [Accessed 24 November 2021].
4. Play Strategy For Scotland: Our Action Plan – Part A: Context, Section 2: Policy Context. Available online at: <https://www.gov.scot/publications/play-strategy-scotland-action-plan/pages/3/> [Accessed 24 November 2021]
5. Play Strategy For Scotland: Our Action Plan - Part B: The Plan for Action. Available online at: <https://www.gov.scot/publications/play-strategy-scotland-action-plan/pages/4/> [Accessed 24 November 2021].
6. Progress review of Scotland's Play Strategy 2021. Available online at: <https://www.playscotland.org/about/play-strategy/> [Accessed 24 November 2021].
7. Learning Through Landscapes. The Good School Playground Guide. Available at: <https://www.ttl.org.uk/resources/the-good-school-playground-guide/> [Accessed 24 November 2021].

Further information

For access to further RMP Resources you may find helpful in reducing your organisation's cost of risk, please access the RMP Resources or RMP Articles pages on our website. To join the debate follow us on our LinkedIn page.

Get in touch

For more information, please contact your broker, RMP risk control consultant or account director.

contact@rmpartners.co.uk



Risk Management Partners

The Walbrook Building
25 Walbrook
London EC4N 8AW

020 7204 1800
rmpartners.co.uk

This note is not intended to give legal or financial advice, and, accordingly, it should not be relied upon for such. It should not be regarded as a comprehensive statement of the law and/or market practice in this area. In preparing this note we have relied on information sourced from third parties and we make no claims as to the completeness or accuracy of the information contained herein. It reflects our understanding as at 29 November 2021, but you will recognise that matters concerning COVID-19 are fast changing across the world. You should not act upon information in this bulletin nor determine not to act, without first seeking specific legal and/or specialist advice. No third party to whom this is passed can rely on it. We and our officers, employees or agents shall not be responsible for any loss whatsoever arising from the recipient's reliance upon any information we provide herein and exclude liability for the content to fullest extent permitted by law. Should you require advice about your specific insurance arrangements or specific claim circumstances, please get in touch with your usual RMP Risk Control consultant or account director.

Risk Management Partners Limited is authorised and regulated by the Financial Conduct Authority. Registered office: The Walbrook Building, 25 Walbrook, London EC4N 8AW. Registered in England and Wales. Company no. 2989025.